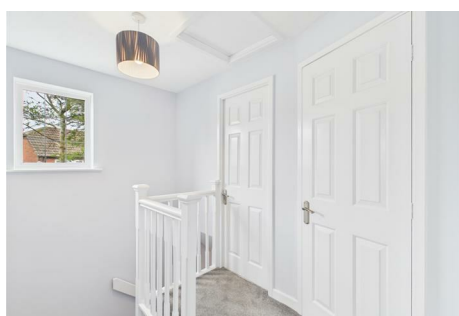


# SOLIHULL RESIDENTIAL LETTINGS



## 14 Buckbury Croft Shirley, Solihull, B90 4YJ

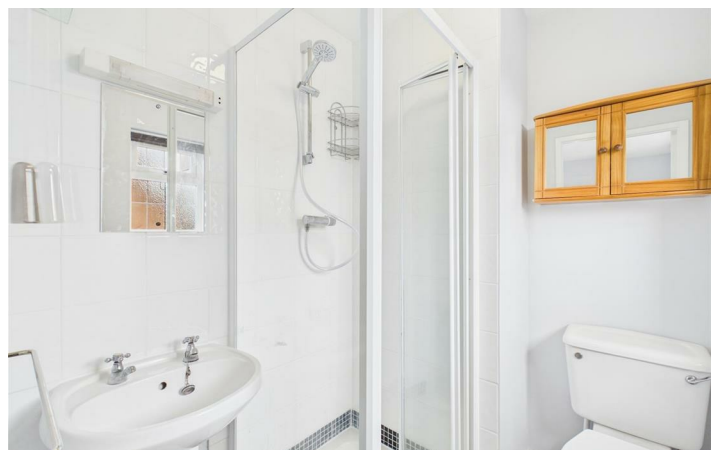
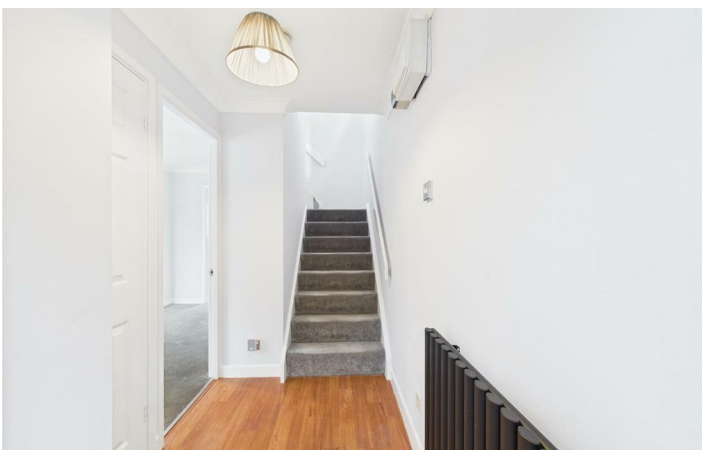
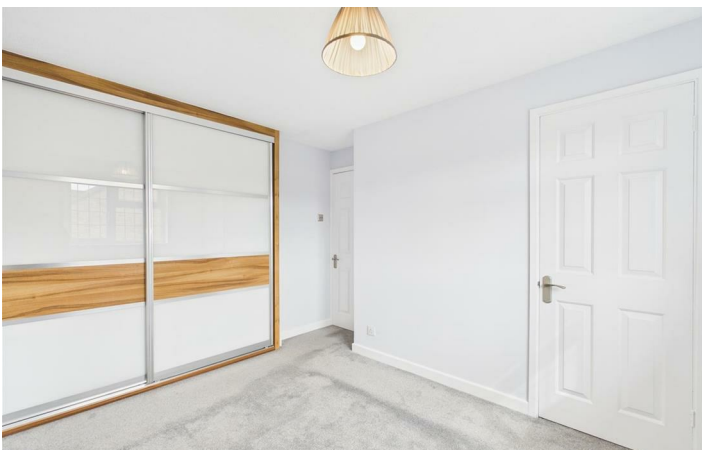
This immaculately presented unfurnished detached home is part of a well-regarded development, offering not just a beautiful home but also an ideal location as it is within walking distance of Solihull Town Centre.

The property is set back and part of a select cul-de-sac community offering seclusion and privacy. Its cul-de-sac setting ensures minimal traffic and noise, creating a tranquil and safe environment for families.

Solihull Town Centre is located just 1.7 miles away and hosts the renowned Touchwood complex offering residents easy access to upscale retail, dining, and entertainment options including a multi-screen cinema theatre and library.

£1,795 Per Month





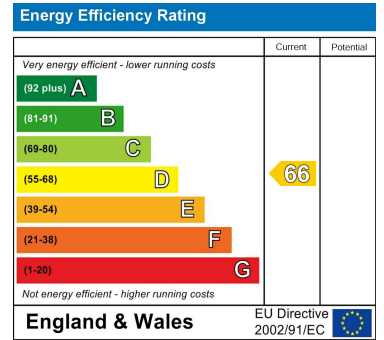


# Floor Plan

## Area Map



## Energy Efficiency Graph



These particulars, whilst believed to be accurate are set out as a general outline only for guidance and do not constitute any part of an offer or contract. Intending purchasers should not rely on them as statements of representation of fact, but must satisfy themselves by inspection or otherwise as to their accuracy. No person in this firm's employment has the authority to make or give any representation or warranty in respect of the property.

Zenith House, Highlands Road, Solihull, B90 4PD

Tel: 01217112222 Email: info@solihullresidential.com www.solihullresidential.com

